

Multimedia Projector

EB-1900/1910/1915

EPSON
EXCEED YOUR VISION

The Perfect Mobile Projector for Every Business and Classroom Environment



- 4000lm Brightness
- Compact in design without compromising on features
- Hassle-free set up with easy-to-use features

High-performing projector ideal for all successful meetings and classes

Multimedia Projector
EB-1900/1910/1915



Enjoy perfect mobility,
easy set-up and
user-friendly features!

The ideal tool offers you the best performance in both business meetings and the classroom!

The Epson EB-1900 series is the compact, portable projector series that delivers high-quality projection without the fuss. Packed with all the functions and features you need for impressive presentations in meetings or in the classroom, the Epson EB-1900 series comes in a clean, easy-to-use, easy-to-maintain design, yet packs a punch.

4000lm Brightness

With a brightness of 4000lm projected images are visible and clear even under fluorescent lights or without curtains.



Front heat exhaust vents

The heat exhaust vents is intelligently positioned in the front so that it will not affect the audience seated at the side of the projector.



Lightweight at up to 3.5kg[^]

At a modest leading lightweight of up to 3.5kg[^], the EB-1900 series projector is extremely mobile and easy to carry around.

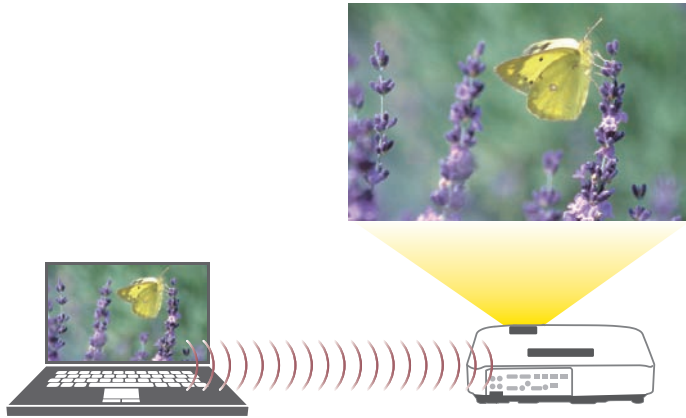
[^] EB-1900 is at 3.2kg and EB-1910 is at 3.4kg



Hassle-free to set up

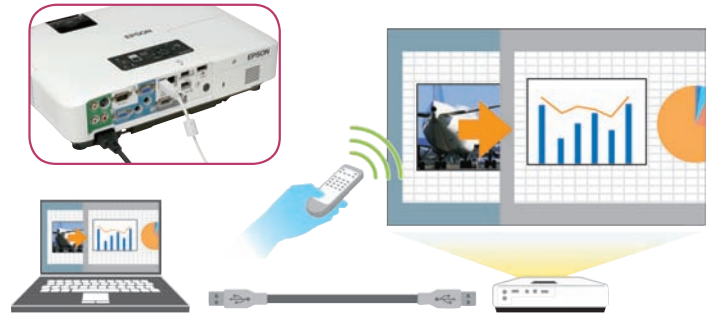
Wireless Connection (For EB-1915 only)

With the wireless connectivity feature, the EB-1900 series projector allows you to make a connection between the PC and the projector directly using an access point within a wireless LAN, thus eliminating messy complicated cables and clutter.



USB Display

With the EB-1900 series projector, you no longer have to deal with complicated set ups. Images can be projected by simply connecting the PC and projector via the included USB cable. In addition, a built-in 10W speaker* allows you to enjoy powerful sound without the need for external speakers.



* Excluding EB-1900

User-friendly features for everyone

“Slide Converter” function (For EB-1915 only)

The EB-1900 series projector comes with “Slide Converter” software, allowing presentations to be made directly via a USB memory device, without the need for any PC/laptop.



Easy to share pictures (Excluding EB-1900)

You can view pictures in JPEG format and save them on a USB memory device directly with the EB-1900 series projector. This feature allows pictures to be converted into “scenario files” as a slide show with the use of a remote control or the operation panel.



Instant On/Off

When you finish your presentation, you can pack up and go. There is no need to wait for the projector to cool down.



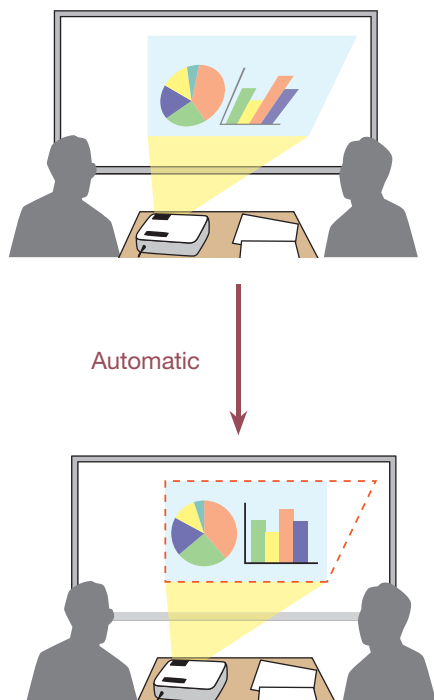
Direct Power On/Off

With this feature, you can connect the projector directly to the room's power source and switch the projector on and off without having to press the “power” button on the projector.

Easy-to-use features that allow images to be adjusted automatically

Auto H/V Keystone Correction (Excluding EB-1900)

During set-up, the projector automatically adjusts the focus and keystone correction, resulting in perfect images without the need for manual adjustment.

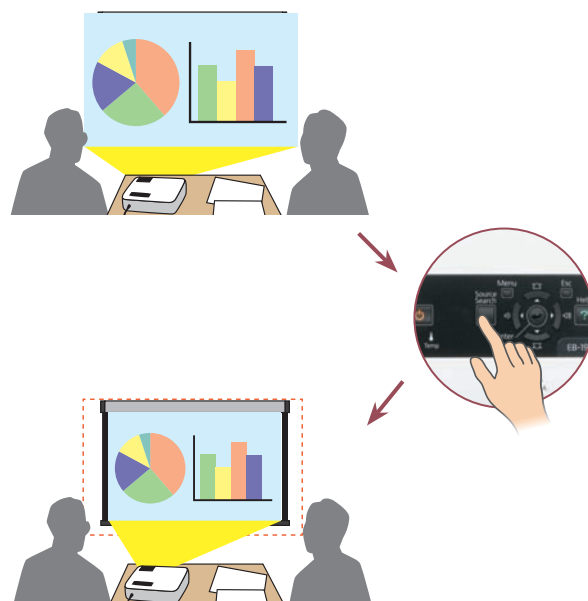


“Screen Fit” (For EB-1915 only)

This one touch “Screen Fit” feature adjusts the image vertically and horizontally to fit to the size of the screen or whiteboard.

Note:

EB-1915 is able to adjust images both vertically and horizontally.
EB-1910 is able to adjust images vertically only.



A whole host of connectivity features to choose from

Wide-ranging Connectivity

Choose from a variety of connections including USB*, LAN*, wireless connection** and HDMI**. It is also possible to connect Epson's ELP-DC06*** document camera with a USB cable*



* Excluding EB-1900

** For EB-1915 only

*** Available from end December 2009



Epson Revolutionises Projector Market with the 3LCD Technology and Retains World No.1 Leadership* for 8 Consecutive Years!

* (Based on independent research by FutureSource Consulting)

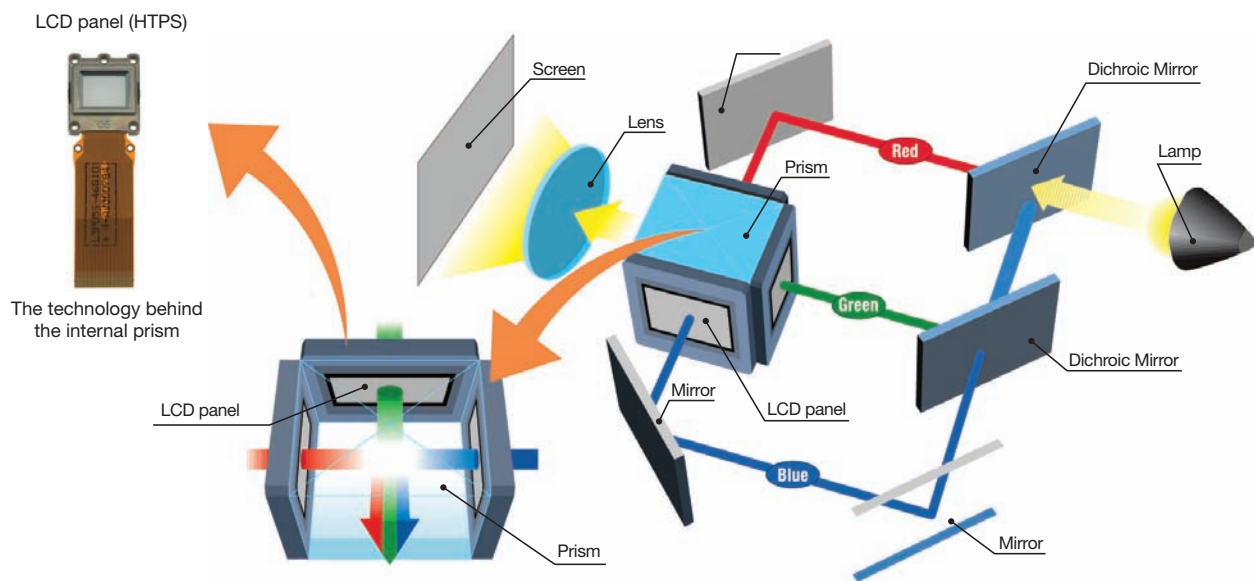
Advantages of 3LCD Projection System

Bright Images and Faithful Colour Reproduction

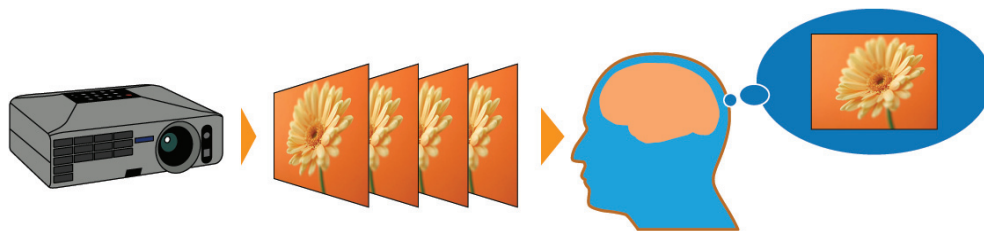
3LCD projectors offer all-time colour (Red, Green and Blue) projection thereby ensuring faithful full colour reproduction. This is suitable for projection of colour intensive images such as videos, photographs and colour charts.

Incredible Details

3LCD projectors are able to produce an unparalleled range of grayscale images thus delivering incredible colour images that is smooth and seamless.



3LCD projector : RGB are projected at the same time so that it is easy on the eyes.



*HTPS (High Temperature Poly-Silicon) is an active matrix transmissive LCD. It is extremely small and produces high quality images.

Gentle on the Eyes

3LCD projectors' images do not suffer from colour break-up (commonly known as rainbow effect). The projections are easy on the eyes as you will not be affected by any distorted pattern.

3LCD projectors use 3 separate LCD panels to form a continuous image containing all colours (red, blue and green) ensuing smooth video playback; even for rapid-motion images.

Reliable Technology

With more than 60 million 3LCD chips shipped to date, the powerful and road-tested 3LCD projection technology is extremely reliable and is trusted by many throughout to deliver sharp and true-to-life images.

Cited from 3LCD Business Centre Press Release: 3LCD Achieves Projection Industry Milestone: 60 Million Chips Shipped, 12 October 2009

SPECIFICATIONS

Weight - approx. 3.5kg / 7.82lbs



Multimedia Projector EB-1900/1910/1915

MODEL NUMBER	EB-1900		EB-1910		EB-1915	
SPECIFICATION OF MAIN PARTS	LCD	SIZE	0.7-inch x 3		786,432 dots (1024 x 768) x 3	
	PROJECTION LENS	PIXEL NUMBER	XGA		Manual Focus & 1.6 x Optical zoom	
	LAMP	NATIVE RESOLUTION	F-number = 1.75 - 2.42 / Focal Length = 24.0 - 38.2mm		Powerd Focus & 1.6 x Optical zoom	
		TYPE	230W UHE		2500 hours (Power Consumption: Normal) / 3500 hours (Power Consumption: ECO)	
		LIFE				
SCREEN SIZE			30" to 300" [0.96 to 16.24m]			
OFFSET			10:1			
LIGHT OUTPUT*	BRIGHTNESS CONTROL NORMAL / ECO		4000 lm / 2700 lm			
COLOUR LIGHT OUTPUT*			4000 lm			
CONTRAST			2000:1			
SOUND OUTPUT			N/A		10W Monaural	
KEYSTONE CORRECTION	VERTICAL		Yes (Manual)		Yes (Auto / Manual)	
	HORIZONTAL		N/A		Yes (Auto / Manual)	
SCREEN FIT			N/A		Yes	
ANALOG RGB	INPUT TERMINAL	VIDEO	D-sub 15 pin x 1		D-sub 15 pin x 2	
	OUTPUT TERMINAL	AUDIO	N/A		Stereo Mini x 2	
		VIDEO	N/A		D-sub 15 pin x 1	
		AUDIO	N/A		Stereo Mini x 1	
VIDEO	INPUT TERMINAL	VIDEO	Composite Video: RCA x 1 (Yellow)		Component Video: D-sub 15 pin x 2 (corresponds with Analog RGB connector)	
			S-Video: Mini DIN x 1		RGB Video: D-sub 15 pin x 2 (corresponds with Analog RGB connector)	
			Component Video: D-sub 15 pin x 1 (corresponds with Analog RGB connector)		RCA x 1 (White/Red)	
		AUDIO	N/A			
DIGITAL INPUT TERMINAL			N/A		HDMI x 1	
CONTROL	USB I/O	TERMINAL	USB Type B x 1		USB Type A x 1 (for USB Memory / for Document Camera)	
	SERIAL	SPEED	USB Type B Ver. 2.0		USB Type A Ver. 2.0	
		TERMINAL	D-sub 9 pin x 1			
		SIGNAL	RS232C			
MEMORY	TERMINAL		N/A		USB Type A x 2 (for USB Memory / for Document Camera)	
	SPEED		N/A			
NETWORK FOR PROJECTION	WIRED LAN	TERMINAL	N/A		RJ45 x 1 100Mbps	
	WIRELESS	SUPPORT SPEEDS FOR EACH MODE	N/A		USB Type A x 1 (IEEE 802.11b: 11Mbps** IEEE 802.11g: 54Mbps** IEEE 802.11a: 54 Mbps**)	
PC APPLICATION			N/A		EasyMP Monitor (for Windows)***	
			N/A		EasyMP Network Projection (for Windows and Mac) No audio***	
			USB Display (for Windows) No audio		EasyMP Network Projection (for Windows and Mac) with audio***	
			N/A		Quick Wireless Connection (for Windows) By way of wired LAN / No audio****	
			N/A		Quick Wireless Connection (for Windows) with audio***	
			N/A		EasyMP Slide Converter (for Windows)***	
OPERATING TEMPERATURE			5°C to 35°C <41°F to 95°F>			
OPERATING ALTITUDE			Up to 7,500 feet <2286m> (over 4,921 feet <1,500m> area : use with High Altitude mode)			
START-UP PERIOD			About 10 sec.			
DIRECT POWER ON			Yes			
DIRECT POWER OFF			Yes			
COOL DOWN PERIOD			Instant off			
POWER SUPPLY VOLTAGE			100 - 240 V AC +/- 10%, 50/60 Hz			
POWER CONSUMPTION	100 - 120V	LAMP ON	317W		341W	
		STAND BY	0.2W (Network Off)		298W	
	220 - 240V	LAMP ON	298W		319W	
		STAND BY	0.3W (Network Off)			
DIMENSIONS EXCLUDE FEET (D x W x H)			257 x 357 x 86mm			
WEIGHT			Approx. 7.25lbs. / 3.2kg		Approx. 7.54lbs. / 3.4kg	
			Approx. 7.82lbs. / 3.5kg		Approx. 7.82lbs. / 3.5kg	
FAN NOISE	BRIGHTNESS CONTROL: NORMAL / ECO		37dB / 29dB			

*Light Output / Colour Light Output / Contrast --- Colour mode: Dynamic, Zoom: Wide
 **Maximum speed and range is achievable when used with same enhanced mode technology. Actual data rates, features and performance may vary depending on your computer system, and environment.
 ***Supplied on included CD-ROM
 ****Supplied as an option

SUPPLIED ACCESSORIES	
Power Cable	3.0m
Remote Control	With AA type alkaline batteries 2pcs
Computer Cable	1.8m <6 ft>, AHD-15 pin type slim-cable
USB Cable	3.0m
Soft Carrying Case	Except EB-1900
Password Protect Sticker	
User's Manual	
Epson Projector Software for Meeting & Presentation (EB1915)	
Epson Projector Software for Meeting & Monitoring (EB1910)	
Wireless LAN Unit	ELPAP03 (EB-1915)

OPTIONAL ACCESSORIES	
ELPLP53	Spare Lamp
ELPAF24	Air Filter Set
ELPAP06	Quick Wireless Connection USB Key
ELPAP03	Wireless LAN Unit
ELPDC06	USB Document Camera

PROJECTION DISTANCE (EB-1900/1910/1915)

4:3 Screen Size	Shortest (Wide)	Longest (Tele)	Offset
X (screen size / dimension)	Y (cm / inch)	Z (cm / inch)	
60" / 150 cm x 91 cm / 59.1" x 35.8"	197 / 78	321 / 126	8 / 3.3
80" / 203 cm x 120 cm / 80.3" x 47.2"	265 / 104	430 / 169	11 / 4.4
100" / 254 cm x 150 cm / 100.0" x 59.1"	332 / 131	538 / 212	14 / 5.5
200" / 510 cm x 300 cm / 200.0" x 118.1"	670 / 264	1081 / 426	28 / 10.9
300" / 762 cm x 450 cm / 300.0" x 177.1"	1007 / 397	1624 / 640	42 / 16.4

EPSON is the registered trademark of Seiko Epson Corporation.

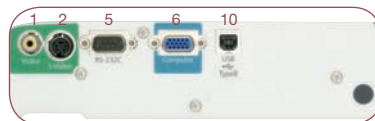
All other product names and other company names used herein are for identification purposes only and are the trademarks or registered trademarks of their respective owners.

EPSON disclaims any and all rights in those marks. Scan/Print samples shown herein are simulations. Specifications are subject to change without notice.

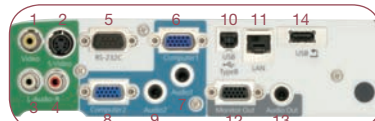
EPSON

EXCEED YOUR VISION

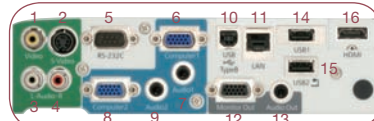
EB-1900



EB-1910



EB-1915



CONNECTOR PANEL

1 Video Input	9 Audio Input 2
2 S-Video	10 USB (Type B)
3 Video-L Input	11 LAN
4 Video-R Input	12 Monitor Out
5 RS-232C	13 Audio Out
6 Computer Input 1	14 USB (Type A) 1
7 Audio Input 1	15 USB (Type A) 2
8 Computer Input 2	16 HDMI

EPSON SINGAPORE PTE LTD

1 HarbourFront Place #03-02
 HarbourFront Tower One Singapore 098633
 Tel: (65) 6586-5500 Fax: (65) 6271-9755
 Epson Helpdesk: (65) 6586-3111

EPSON SERVICE @ YISHUN

Blk 744 Yishun Street 72 #01-193
 Singapore 760744

EPSON SERVICE @ CHANGI

C&P Changi District Centre 2
 3rd Level 3 Changi South Street
 Singapore 486351



Dealer's Stamp

Printed in October 2009

www.epson.com.sg